

## 3003 Larimer Office/Studio

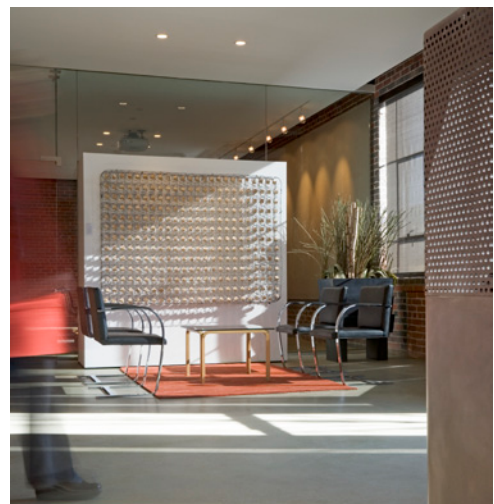
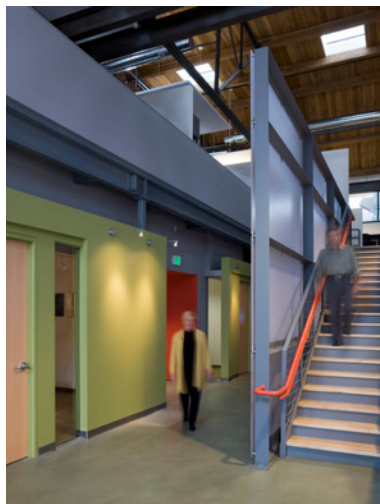
### High Performance Goals:

- LEED Gold CI Certified
- Reuse of existing furniture (30%)
- Recycled content materials (20%)
- Regionally extracted and manufactured materials (35%)
- Construction waste diverted from landfills (75%)
- Reduction in lighting power (25%)
- Low-emitting materials
- Reduction in lighting power (25%)
- Reduction in water use due to low flow fixture design (25%)
- Daylighting (75% of spaces)
- Views to exterior (90% of spaces)
- Exterior surfaces roof and non roof surfaces designed to reduce heat island effect (100%)

Located in the heart of the newly developing River North (RiNo) District this former steel foundry building was the first adaptable re-use project in Denver to achieve LEED Gold certification.

The open studio plan fosters a collaborative design process. There are no private offices in the building with senior staff distributed throughout the studio, reinforcing the accessibility of staff and interaction at all levels. Informal "charette rooms" are provided throughout the space for quick pin-up and in-depth dialogues.

The design of the studio preserves and integrates as much of the original building as possible. Work stations and charrette rooms are designed around a collection of existing cranes and foundry equipment, creating a playful balance between the old industrial remnants and the new technologies and materials.



## 3003 Larimer Office/Studio

completion date: October 2007  
total square feet: 14,200

awards:  
2009 AIA Denver Design Award of Honor  
2008 Workspace of the Year Award from  
Colorado Business Committee for the Arts

client reference:  
Tom Sprung  
Sprung Construction  
303.293.2777

