

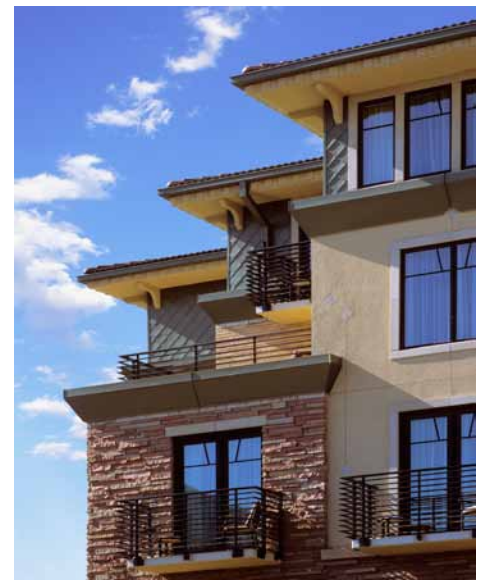
St. Julien Hotel & Spa

High Performance Goals:

- Building clad in local Colorado sandstone and regional brick source
- Redevelopment of a surface parking lot in an urban setting
- Shared parking located below grade so as not to contribute to heat island effect
- High efficiency central mechanical plant.
- Low-e double-pane glazing in all guest rooms to minimize energy loss
- All public spaces have ample natural light and views.
- Low-flow toilets have been installed in both the public areas and guest rooms
- Motion detector faucets and toilets have been installed in public areas
- Water recycling system of the laundry equipment which also reduces energy consumption

The St. Julien Hotel & Spa reflects the surrounding city of Boulder, a unique community with its own sense of style and serenity and strict design guidelines. The building's exterior materials reference the nearby University of Colorado campus buildings and adjacent residential neighborhoods. This 200-room, four-star, four-story, business boutique hotel sits above a two-level, below-grade municipal parking garage and covers a full downtown city block. Its discreetly elegant entrance on a very busy street presents a porte-cochere while the hotel's backside opens to sweeping mountain views with a cascade of terraced gardens, a gazebo, outdoor promenades, and seating areas. The ground floor accommodates a restaurant, conference center, pool, spa, hotel lobby, administrative and back-of-house space.

All hotel rooms are on the upper three floors with dramatic views of the Flatirons and the Front Range of the Rockies.



St. Julien Hotel & Spa

location: Boulder, Colorado
total square feet: Hotel 150,000 sq ft;
Conference center 10,000 sq ft
completion date: 2005
client: St. Julien Partners

